

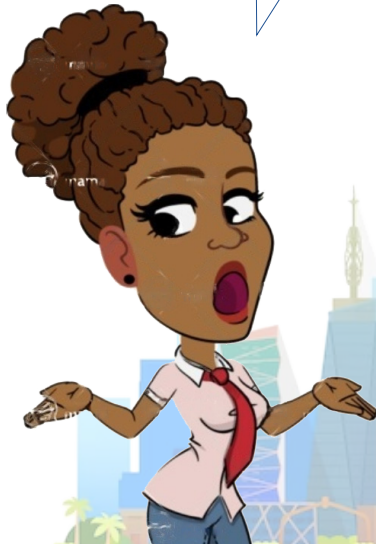
OFFICE OF THE DATA PROTECTION COMMISSIONER

# DATA PROTECTION IN KENYA

WHAT YOU NEED TO KNOW



HII DATA PROTECTION ACT NI NINI?



NI SHERIA INAYOHAKIKISHA PERSONAL DATA YAKO INATUMIKA KWA NJIA INAYOFAA..



HII SHERIA ILISABABISHA KUUNDWA KWA OFISI YA DATA PROTECTION COMMISSIONER, KWA UFUJI ODPC



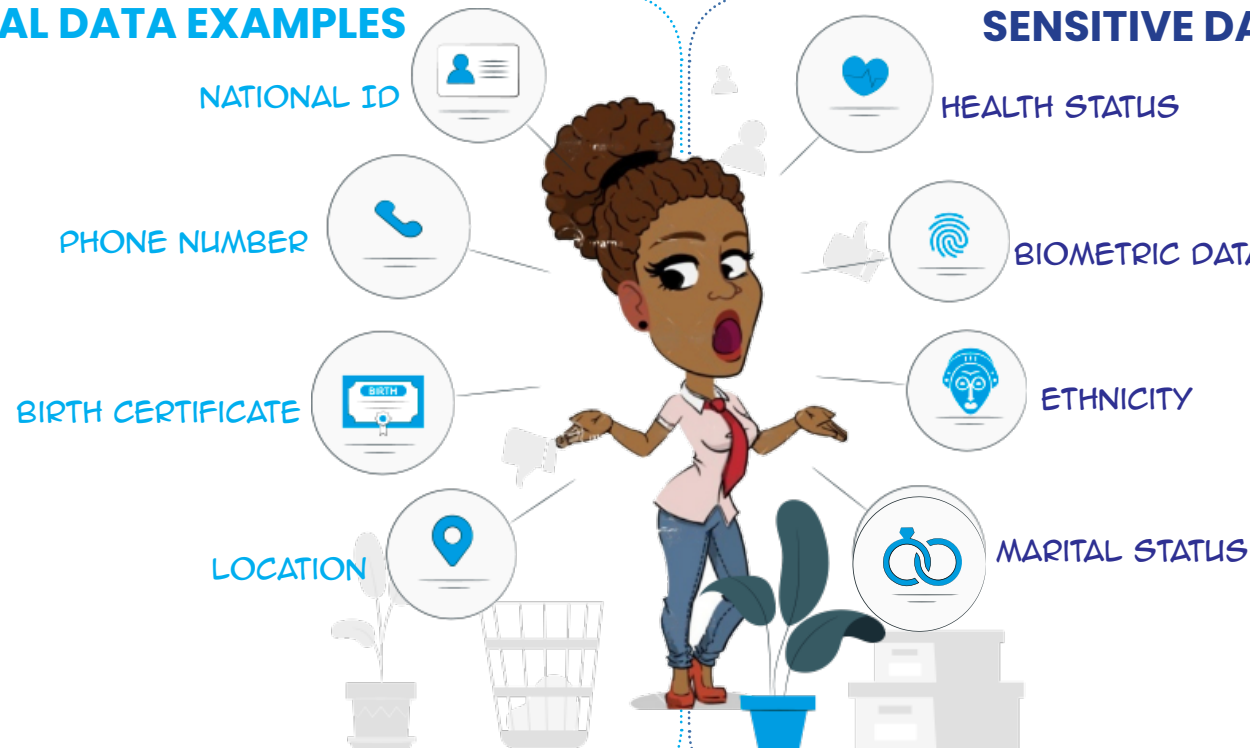
ATI ODPC? WHAT IS THEIR FUNCTION?



## ODPC FUNCTION

- Protect the privacy of individuals.
- Provide data subjects with rights and remedies to protect their personal data from processing that is not in accordance with the Act.
- Educating and creating awareness to the public on their rights and obligations under the Act.

## PERSONAL DATA EXAMPLES



Note : These are a few common examples

## Who collects your Personal data?

Your personal data can be collected directly by Data Controllers like Banks, Schools and Hospitals or indirectly through Data Processors like Mtaani Bank Agents and Security Guards when entering a building



A DATA SUBJECT IS ANY NATURAL PERSON WHO HAS PERSONAL DATA AND SENSITIVE PERSONAL DATA.



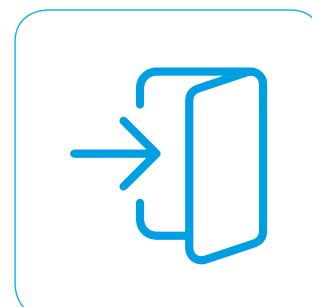
NAJUA AJE PERSONAL DATA YANGU IKO SAFE WITH DATA CONTROLLERS NA PROCESSORS?



## You have a right to ask a data controller or processor:



- Kufahamishwa juu ya matumizi ya personal data yako.



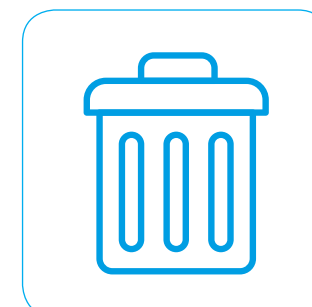
- Ni haki yako kupata personal data yako iliyo chini ya ulinzi wa data controller au processor.



- Una haki ya kupinga uchakataji (processing) wa yote au sehemu ya personal data yako



- Una haki ya kusahihisha data ya uwongo au ya kupotosha kukuhusu



- Una haki ya personal data yako kufutwa



OFFICE OF THE DATA PROTECTION COMMISSIONER

NOW YOU KNOW, THANKS



Tel: +254752896867 +254796954269

Office: 12<sup>th</sup> Floor, Britam Tower, Hospital Road, Upperhill.

Web: www.odpc.go.ke

### Example of Data Controller:

A Hospital collecting personal data from patients



### Example of Data Processor:

Security firm hired by the hospital to collect personal data of hospital's visitors



# Some of Data Controller and Processor Compliance Obligations



- **Jisajili:** Register or renew with ODPC as a data controller and/or data processor
- **Hakikisha:** All your services, programmes projects, and partners comply with the data protection framework
- **Chapisha:** Develop and publish your data protection policy
- **Makubaliano:** Enter into contractual data sharing agreements between data controllers and data processors.
- **Fanya assessment:** Conduct data protection impact assessments
- **Julisha:** Notify the Data Commissioner within 72 hours in case of data breach and communicate to the data subject

## Registration process



Register online at [www.odpc.go.ke](http://www.odpc.go.ke)

WHAT IF THERE IS A BREACH?

EASY, REPORT THE BREACH TO ODPC...

YOU CAN REPORT IN WRITING VIA POST, EMAIL, OR WEBSITE

THEN WHAT HAPPENS?

ODPC WILL FACILITATE INVESTIGATION AND TAKE ENFORCEMENT MEASURES.

WHERE CAN I GET ALL THIS JUICY INFORMATION?

VISIT [WWW.ODPC.GO.KE](http://WWW.ODPC.GO.KE) FOR MORE INFORMATION

